



200-301^{Q&As}

Implementing and Administering Cisco Solutions (CCNA) (Include Newest Simulation Labs)

Pass Cisco 200-301 Exam with 100% Guarantee

Free Download Real Questions & Answers **PDF** and **VCE** file from:

<https://www.pass4itsure.com/200-301.html>

100% Passing Guarantee
100% Money Back Assurance

Following Questions and Answers are all new published by Cisco
Official Exam Center

- ⚙️ **Instant Download** After Purchase
- ⚙️ **100% Money Back** Guarantee
- ⚙️ **365 Days** Free Update
- ⚙️ **800,000+** Satisfied Customers





QUESTION 1

DRAG DROP

Drag and drop the characteristic from the left onto the cable type on the right.

Select and Place:

Answer Area

uses a single wavelength on light

becomes distorted at longer lengths

is typically used for internal datacenter connectivity

has minimal light reflection as it travels down the core

multimode fiber

single-mode fiber



Correct Answer:

Answer Area

multimode fiber

is typically used for internal datacenter connectivity

becomes distorted at longer lengths

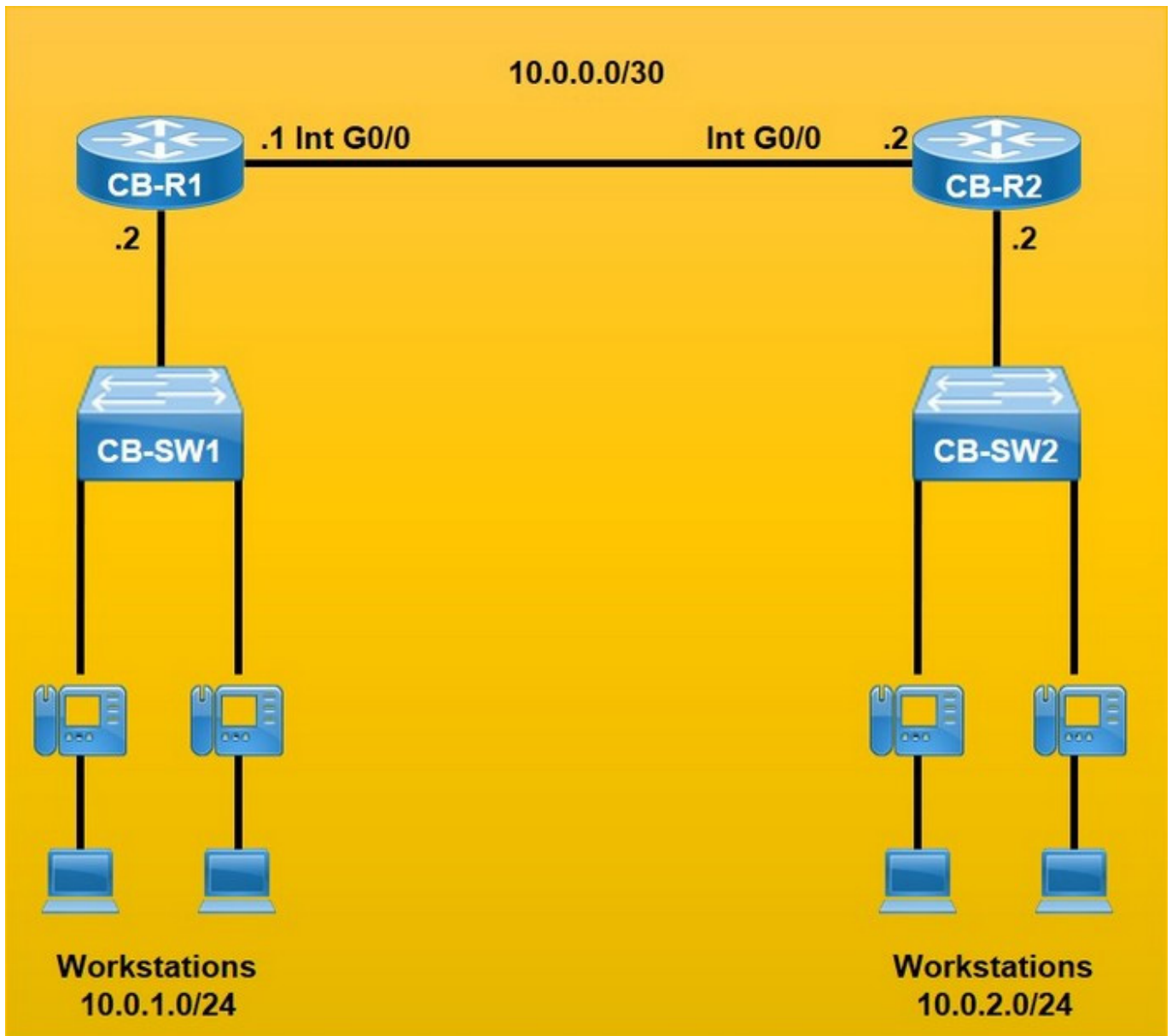
single-mode fiber

uses a single wavelength on light

has minimal light reflection as it travels down the core

QUESTION 2

Refer to the exhibit.



An engineer is asked to config router CB-R1 so that it forms an OSPF single-area neighbor relationship with CB-R2.

Which command sequence must be implemented to configure the router?

- A. `router ospf 10 network 10.0.0.0 0.0.0.3 area 0 network 10.0.2.0 0.0.0.255 area 0`
- B. `router ospf 10 network 10.0.0.0 0.0.0.3 area 0 network 10.0.1.0 0.0.0.255 area 0`
- C. `router ospf 10 network 10.0.0.0 0.0.0.3 area 0 network 10.0.2.0 255.255.255.0 area 0`
- D. `router ospf 10 network 10.0.0.0 0.0.0.252 area 0 network 10.0.1.0 0.0.0.255 area 0`

Correct Answer: B

Configure route to 10.0.0.0/30 with wildcard 0.0.0.3 Configure route to 10.0.1.0/24 with wildcard 0.0.0.255 `router ospf 10 network 10.0.0.0 0.0.0.3 area0 network 10.0.1.0 0.0.0.255 area0`

**QUESTION 3**

What is represented by the word "IDS" within this JSON schema?

```
1 [  
2 {"firewall": "FW_portland", "port": "e2/5"},  
3 {"IDS": "IPS31", "port": "ge0/28"},  
4 {"load balancer": "LB48", "port": "fe0/43"}  
5 ]
```

- A. object
- B. value
- C. array
- D. key

Correct Answer: D

QUESTION 4

Which two components are needed to create an Ansible script that configures a VLAN on a switch? (Choose two.)

- A. cookbook
- B. task
- C. playbook
- D. model
- E. recipe

Correct Answer: BC

Ansible playbooks: "files that provide actions and logic about what Ansible should do."

"The playbook will list tasks and choices based on those results, like "Configure all branch routers in these locations, and if errors occur for any device, do these extra tasks for that device"."

QUESTION 5

Refer to the exhibit.



R7#

172.22.0.0/24 is subnetted, 1 subnets

D 172.22.49.0 [90/284160] via 10.81.22.2, 04:55:53, FastEthernet0/0

10.0.0.0/8 is variably subnetted, 26 subnets, 5 masks

D EX 10.10.10.10/32 [170/35840] via 10.3.5.1, 04:55:55, FastEthernet0/1

D 10.9.1.0/30 [90/33280] via 10.3.5.1, 04:55:56, FastEthernet0/1

B 10.111.99.0/24 [20/0] via 10.6.25.2, 03:58:52

D 10.14.3.0/30 [90/30720] via 10.3.5.1, 04:55:58, FastEthernet0/1

C 10.9.4.0/30 is directly connected, FastEthernet1/0

B 10.100.100.0/24 [20/0] via 10.6.25.2, 03:58:53

D 10.0.1.0/30 [90/30720] via 10.3.5.1, 04:55:58, FastEthernet0/1

D EX 10.10.10.70/32 [170/161280] via 10.3.5.1, 04:55:57, FastEthernet0/1

B 10.90.0.0/16 [200/0] via 0.0.0.0, 03:57:59, Null0

D EX 10.90.1.0/24 [170/158720] via 10.3.5.1, 04:55:57, FastEthernet0/1

D EX 10.90.2.0/24 [170/158720] via 10.3.5.1, 04:55:57, FastEthernet0/1

D 10.90.3.0/29 [90/161280] via 10.3.5.1, 02:46:03, FastEthernet0/1

D EX 10.90.3.0/24 [170/158720] via 10.3.5.1, 02:46:04, FastEthernet0/1

D EX 10.90.4.0/24 [170/158720] via 10.3.5.1, 04:55:59, FastEthernet0/1

D EX 10.90.5.0/24 [170/158720] via 10.3.5.1, 04:55:59, FastEthernet0/1

B* 0.0.0.0/0 [20/0] via 10.6.25.2, 02:22:38

According to the output, which parameter set is validated using the routing table of R7?

- A. R7 is missing a gateway of last resort. R7 is receiving routes that were redistributed in EIGRP. R7 will forward traffic destined to 10.90.8.0/24.
- B. R7 has a gateway of last resort available. R7 is receiving routes that were redistributed from BGP. R7 will drop traffic destined to 10.90.8.0/24.
- C. R7 is missing a gateway of last resort. R7 is receiving routes that were redistributed from BGP. R7 will forward traffic destined to 10.90.8.0/24.
- D. R7 has a gateway of last resort available. R7 is receiving routes that were redistributed in EIGRP.
R7 will drop traffic destined to 10.90.8.0/24.

Correct Answer: D

EX = redistributed in EIGRP. We don't know for sure from what source these routes were redistributed.

QUESTION 6



DRAG DROP

Drag and chop the TCP/IP protocols from the left onto their primary transmission protocols on the right.

Select and Place:

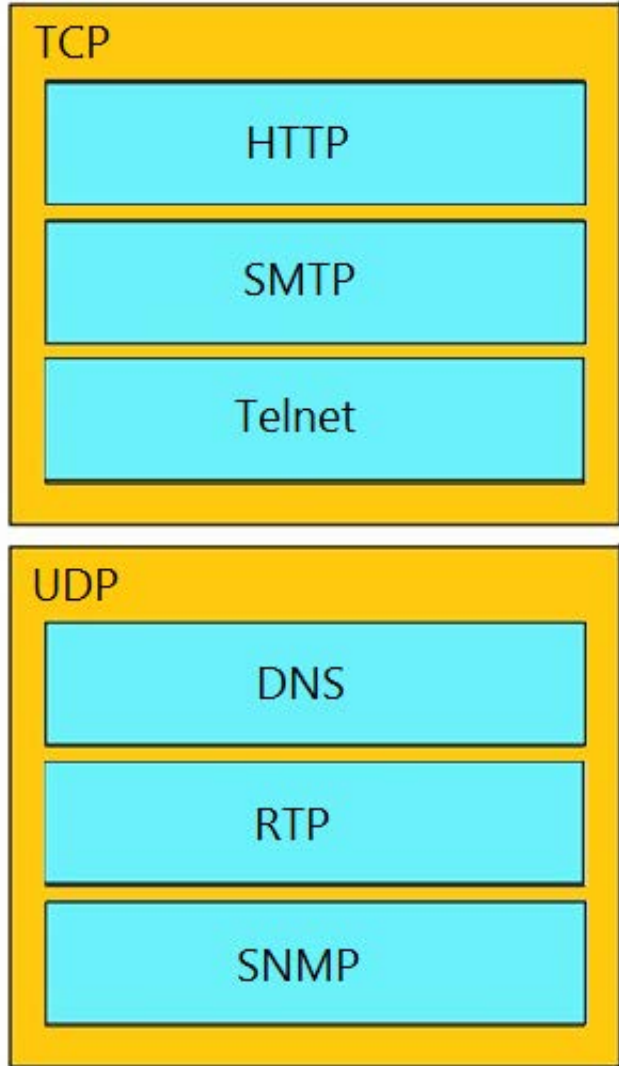
- DNS
- HTTP
- RTP
- SMTP
- SNMP
- Telnet

TCP

UDP

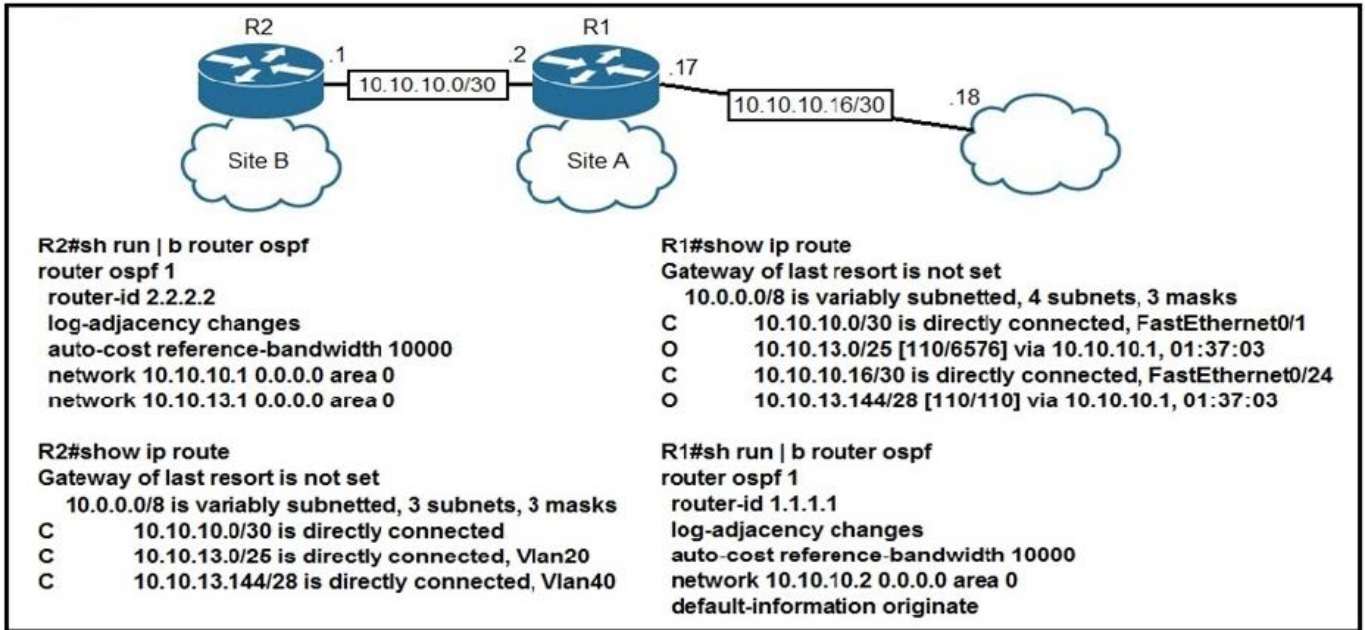
Correct Answer:





QUESTION 7

Refer to the exhibit.



The default-information originate command is configured under the R1 OSPF configuration. After testing, workstations on VLAN 20 at Site B cannot reach a DNS server on the Internet. Which action corrects the configuration issue?

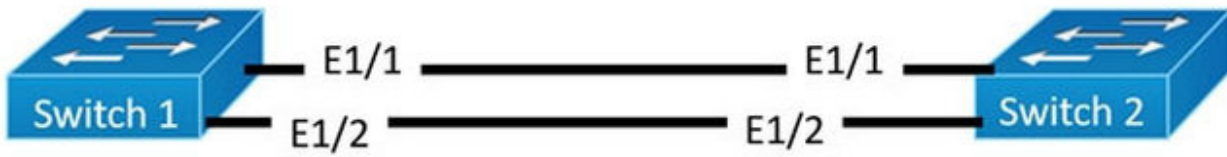
- A. Add the default-information originate command on R2.
- B. Add the always keyword to the default-information originate command on R1.
- C. Configure the ip route 0.0.0.0 0.0.0.0 10.10.10.18 command on R1.
- D. Configure the ip route 0.0.0.0 0.0.0.0 10.10.10.2 command on R2.

Correct Answer: C

The default-information originate command advertises a default route into a normal area, provided the advertising router already has a default route. But in the routing table of R1 we don't see such a default route. Therefore we have to configure one.

QUESTION 8

Refer to the exhibit.



```

Interface Po1
switchport
switchport mode access
switchport access vlan 2
  
```

```

Interface E1/1 - 2
Switchport
Switchport mode access
Switchport access vlan 2
  
```

```

Interface Po1
switchport
switchport mode access
switchport access vlan 2
  
```

```

Interface E1/1 - 2
Switchport
Switchport mode access
Switchport access vlan 2
  
```

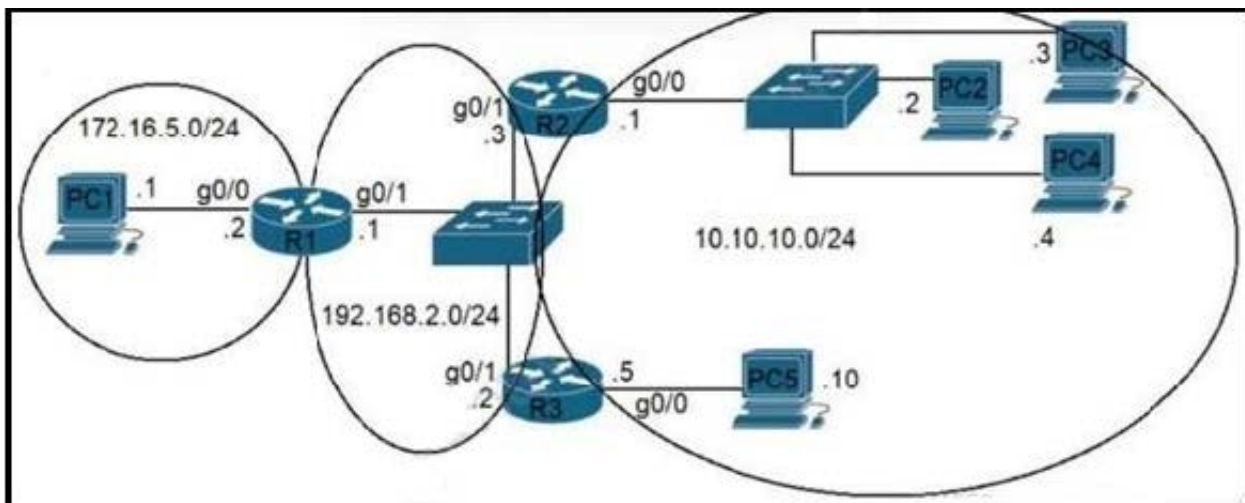
An engineer is configuring an EtherChannel using LACP between Switches 1 and 2. Which configuration must be applied so that only Switch 1 sends LACP initiation packets?

- A. Switch 1 (config-if)#channel-group 1 mode on Swtch2(config-if)#channel-group 1 mode passive
- B. Switch1(config-if)#channel-group 1 mode passive Switch2(config-if)#channel-group 1 mode active
- C. Switch1(config-if)#channel-group 1 mode active Switch2(config-if)#channel-group 1 mode passive
- D. Switch1(config-if)#channel-group 1 mode on Switch2(config-if)#channel-group 1 mode active

Correct Answer: C

QUESTION 9

Refer to the exhibit.





The router R1 is in the process of being configured. Routers R2 and R3 are configured correctly for the new environment. Which two commands must be configured on R1 for PC1 to communicate to all PCs on the 10.10.10.0/24 network? (Choose two.)

- A. ip route 10.10.10.0 255.255.255.0 192.168.2.3
- B. ip route 10.10.10.10 255.255.255.255 192.168.2.2
- C. ip route 10.10.10.10 255.255.255.255 g0/1
- D. ip route 10.10.10.8 255.255.255.248 g0/1
- E. ip route 10.10.10.0 255.255.255.248 192.168.2.2

Correct Answer: AB

10.10.10.0 255.255.255.248 Usable address range 10.10.10.1 to 10.10.10.6

QUESTION 10

What are two features of the DHCP relay agent? (Choose two.)

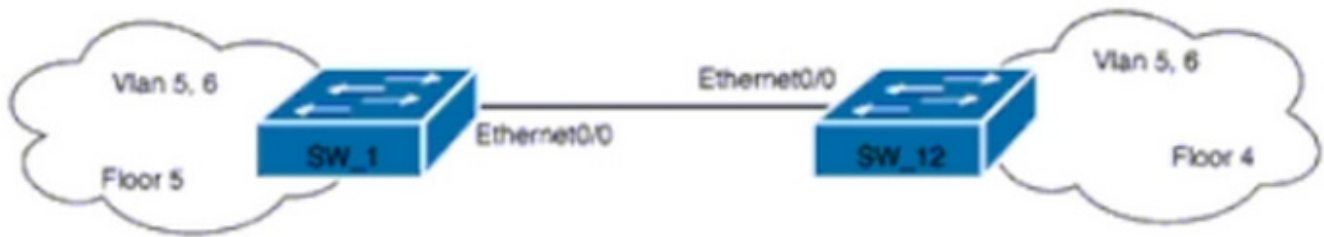
- A. assigns DNS locally and then forwards request to DHCP server
- B. minimizes the necessary number of DHCP servers
- C. permits one IP helper command under an individual Layer 3 interface
- D. is configured under the Layer 3 interface of a router on the client subnet
- E. allows only MAC-to-IP reservations to determine the local subnet of a client

Correct Answer: BD

The DHCP relay agent itself does not assign anything locally or otherwise DNS or otherwise, so A is incorrect. It does minimize the number of DHCP servers because it means we don't need a DHCP server on every subnet, so B is correct. You actually can configure more than one IP helper command under an individual Layer 3 interface, so C is incorrect and D is correct.

QUESTION 11

Refer to the exhibit



```
Name: Et0/0
Switchport: Enabled
Administrative Mode: static access
Operational Mode: static access
Administrative Trunking Encapsulation: isl
Operational Trunking Encapsulation: native
Negotiation of Trunking: Off
Access Mode VLAN: 7 (VLAN0007)
Trunking Native Mode VLAN: 1 (default)
Administrative Native VLAN tagging: enabled
Voice VLAN: none
---
Trunking VLANs Enabled: 5,6
Pruning VLANs Enabled: 2-1001
Capture Mode Disabled
Capture VLANs Allowed: ALL
```

SW_1 and SW_12 represent two companies that are merging. They use separate network vendors. The VLANs on both sides have been migrated to share IP subnets.

Which command sequence must be issued on both sides to join the two companies and pass all VLANs between the companies?

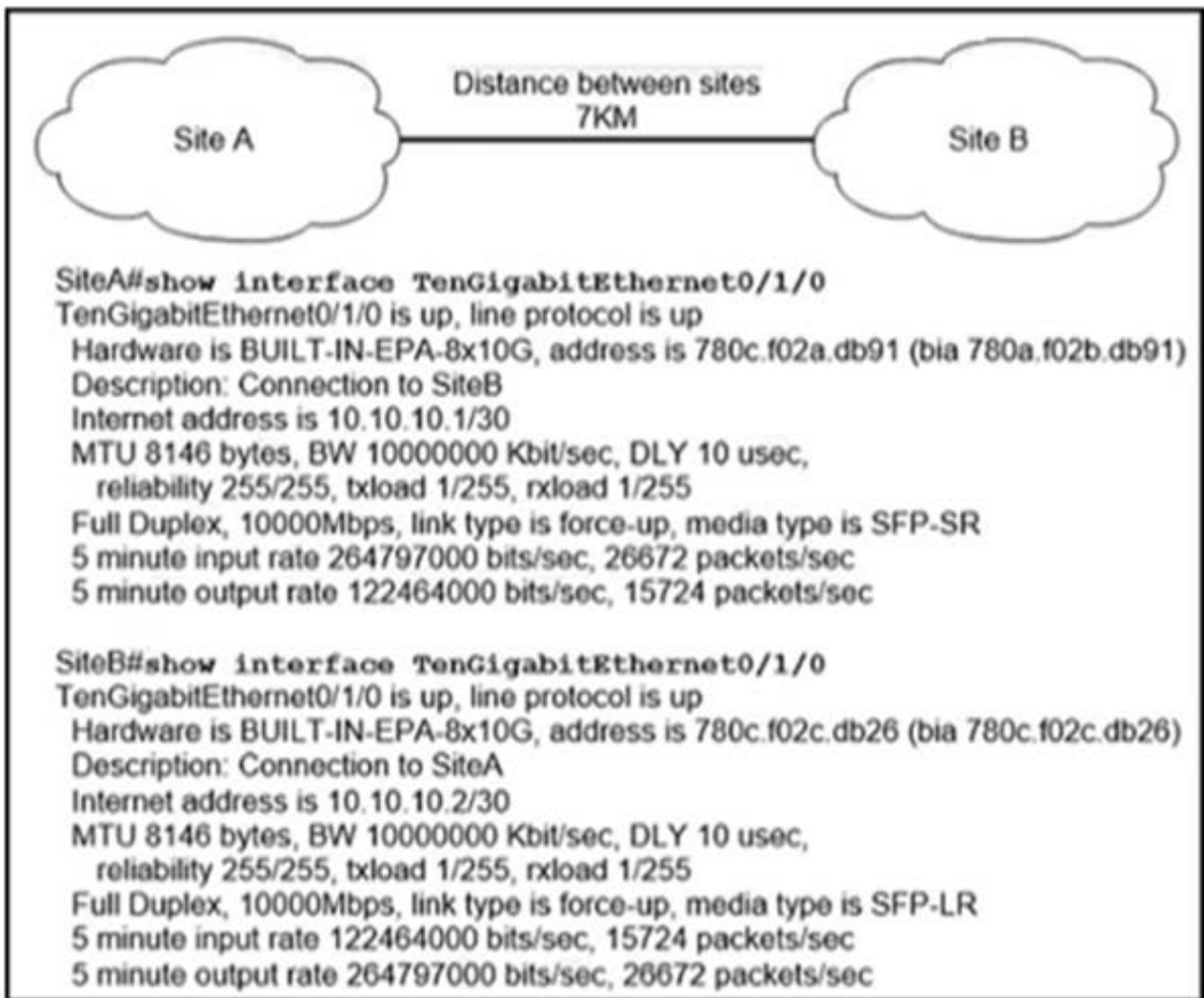
- A. `switchport mode trunkswitchport trunk encapsulation dot1q`
- B. `switchport mode trunkswitchport trunk allowed vlan allswitchport dot1q ethertype 0800`
- C. `switchport mode dynamic desirableswitchport trunk allowed vlan allswitchport trunk native vlan 7`
- D. `switchport dynamic autoswitchport nonegotiate`

Correct Answer: A

purpose is to change the encapsulation to dot1q because isl is a Cisco proprietary protocol

QUESTION 12

Refer to the exhibit.



Site A was recently connected to site B over a new single-mode fiber path. Users at site A report Intermittent connectivity Issues with applications hosted at site B. What is the reason for the problem?

- A. Heavy usage is causing high latency.
- B. An incorrect type of transceiver has been inserted into a device on the link.
- C. physical network errors are being transmitted between the two sites.
- D. The wrong cable type was used to make the connection.

Correct Answer: B

The -SR stands for a short reach transceiver and is used for short range applications up to 300 meters, while the -LR can achieve up to 10km

QUESTION 13

What is a functionality of the control plane in the network?



- A. It looks up an egress interface in the forwarding information base.
- B. It forwards traffic to the next hop.
- C. It exchanges topology information with other routers.
- D. It provides CLI access to the network device.

Correct Answer: C

[200-301 PDF Dumps](#)

[200-301 Study Guide](#)

[200-301 Braindumps](#)