



# 300-515<sup>Q&As</sup>

Implementing Cisco Service Provider VPN Services (SVPI)

## Pass Cisco 300-515 Exam with 100% Guarantee

Free Download Real Questions & Answers **PDF** and **VCE** file from:

<https://www.pass4itsure.com/300-515.html>

100% Passing Guarantee  
100% Money Back Assurance

Following Questions and Answers are all new published by Cisco  
Official Exam Center

-  **Instant Download** After Purchase
-  **100% Money Back** Guarantee
-  **365 Days** Free Update
-  **800,000+** Satisfied Customers



**QUESTION 1**

What do EVPN single-active and all-active have in common?

- A. They are default gateway redundancy options.
- B. They are multihoming mechanisms used for CE devices.
- C. They are used to provide single connection from a CE device to a service provider.
- D. They are both roles that a designated router can take when MPLS is used with EVPN.

Correct Answer: D

Reference: [https://www.cisco.com/c/en/us/td/docs/routers/asr9000/software/asr9k-r6-2/lxvpn/configuration/guide/b-l2vpn-cg-asr9000-62x/b-l2vpn-cg-asr9000-62x\\_chapter\\_01011.html](https://www.cisco.com/c/en/us/td/docs/routers/asr9000/software/asr9k-r6-2/lxvpn/configuration/guide/b-l2vpn-cg-asr9000-62x/b-l2vpn-cg-asr9000-62x_chapter_01011.html)

---

**QUESTION 2**

An ISP provides a major client MPLS VPN for managed services. The MPLS engineering team needs to use the advanced VPN feature of selective VRF import so that only specific prefixes are present in the required VPNs. Which aspect of this feature must the team consider?

- A. A route must pass the import route map first and then the route target import filter.
- B. The routers that are imported in the VRF can be BGP and IGP routes, so other match conditions in the route map, besides communities, can be used.
- C. The import-map command is applied under the PE interface that connects to the CE router.
- D. A route is imported into the VRF only when at least one RT that is attached to the route matches one RT that is configured in the VRF and the route is permitted by the import route map.

Correct Answer: D

Reference: <https://www.ccexpert.us/mpls/configuring-selective-vrf-import.html>

---

**QUESTION 3**

Which tool identifies the point of failure in a P2MP LSP from the ingress LSR?

- A. Jitter TLV
- B. SPAN
- C. P2MP traceroute
- D. P2MP ping

Correct Answer: C



Reference: [https://www.cisco.com/c/en/us/td/docs/routers/asr9000/software/asr9k\\_r5-3/mps/configuration/guide/b-mpls-cg53x-asr9k/b-mpls-cg53x-asr9k\\_chapter\\_01000.html](https://www.cisco.com/c/en/us/td/docs/routers/asr9000/software/asr9k_r5-3/mps/configuration/guide/b-mpls-cg53x-asr9k/b-mpls-cg53x-asr9k_chapter_01000.html)

---

#### QUESTION 4

Which two frames can be configured on an Ethernet flow point? (Choose two.)

- A. of a specific VLAN
- B. with different type of service values
- C. with identical type of service value
- D. with different class of service values
- E. with no tags

Correct Answer: AE

Reference: <https://www.cisco.com/c/en/us/td/docs/ios-xml/ios/cether/configuration/xe-3s/asr903/16-5-1/b-ce-xe-16-5-asr900/trunk-efp-support.html>

---

#### QUESTION 5

In an Ethernet Virtual Circuit environment, which restriction do bridge domains have when STP is running?

- A. The STP mode must be RSTP or PVST+
- B. Bridge domains must be mapped to a different VLAN.
- C. The STP mode must be MSTP
- D. Bridge domains must belong to different MST instances.

Correct Answer: C

Reference: [https://www.cisco.com/c/en/us/td/docs/routers/asr920/configuration/guide/ce/b\\_ce\\_xe-313s-asr920-book/b\\_ce\\_xe-313s-asr920-book\\_chapter\\_01.html#reference\\_770349446ED24E83821EF701DDC46BFD](https://www.cisco.com/c/en/us/td/docs/routers/asr920/configuration/guide/ce/b_ce_xe-313s-asr920-book/b_ce_xe-313s-asr920-book_chapter_01.html#reference_770349446ED24E83821EF701DDC46BFD)

---

#### QUESTION 6



<b>PE1</b> ip vrf CE1 rd 111:1 route-target export 100:1 route-target import 200:2	<b>PE2</b> ip vrf CE2 rd 112 :2 route-target export 200:2 route-target import 100:1 route-target import 300:3
<b>PE3</b> ip vrf Internet rd 333:3 route-target export 300:3 route-target import 100:1 route-target import 200:2	

Refer to the exhibit. PE1 and PE2 are exchanging VPNv4 routes for CE1 and CE2, and PE3 contains the default route to the internet. If the three devices are operating normally, which two conclusions describe this configuration? (Choose two.)

- A. The CE1 and CE2 VRFs can exchange routes only between their respective VRFs on PE1 and PE2.
- B. All three routers must be running a distance-vector routing protocol.
- C. All three routers must be running MP-BGP.
- D. The CE1 and CE2 VRFs can access the default route provided by the Internet VRF.
- E. Only the CE2 VRF can access the default route provided by the Internet VRF.

Correct Answer: AC

## QUESTION 7



```
R1#sho run sec router isis
ip router isis
router isis
net 49.0002.1010.2021.00
is-type level-1
spf-interval 110

R2#sho run sec router isis
ip router isis
router isis
net 49.0001.1010.2020.00
is-type level-2-only
set-overload-bit
spf-interval 100
redistribute static ip
```

Refer to the exhibit. A technician is troubleshooting a connectivity issue and notices that there is no IS-IS adjacency between R1 and R2. What can the technician change to bring the IS-IS adjacency up?

- A. Change R2's net address to be in the same area as R1.
- B. Change R1's is-type to level-2-only
- C. Change R1's net address to be in the same area as R2.
- D. Change R2's configuration to no longer set the overload bit.

Correct Answer: B

#### QUESTION 8

An engineer needs to improve MPLS network management by implementing a set of tools to support the NOC engineers in troubleshooting network failures. Which feature should the engineer implement to check the connectivity of the MPLS LSP between the ingress and egress PE routers?

- A. MPLS OAM
- B. MPLS-TP
- C. LDP autodiscovery
- D. extended ping

Correct Answer: A

Reference: [https://www.cisco.com/c/en/us/td/docs/routers/asr9000/software/asr9k\\_r5-3/mpls/configuration/guide/b-mpls-cg53x-asr9k/b-mpls-cg53x-asr9k\\_chapter\\_01000.html](https://www.cisco.com/c/en/us/td/docs/routers/asr9000/software/asr9k_r5-3/mpls/configuration/guide/b-mpls-cg53x-asr9k/b-mpls-cg53x-asr9k_chapter_01000.html)



### QUESTION 9

While configuring the VRF Selection feature, you get an error message after typing the below statement:

```
Router(config)#no vrf selection source 172.16.0.0 255.255.0.0 vrf VRF1
```

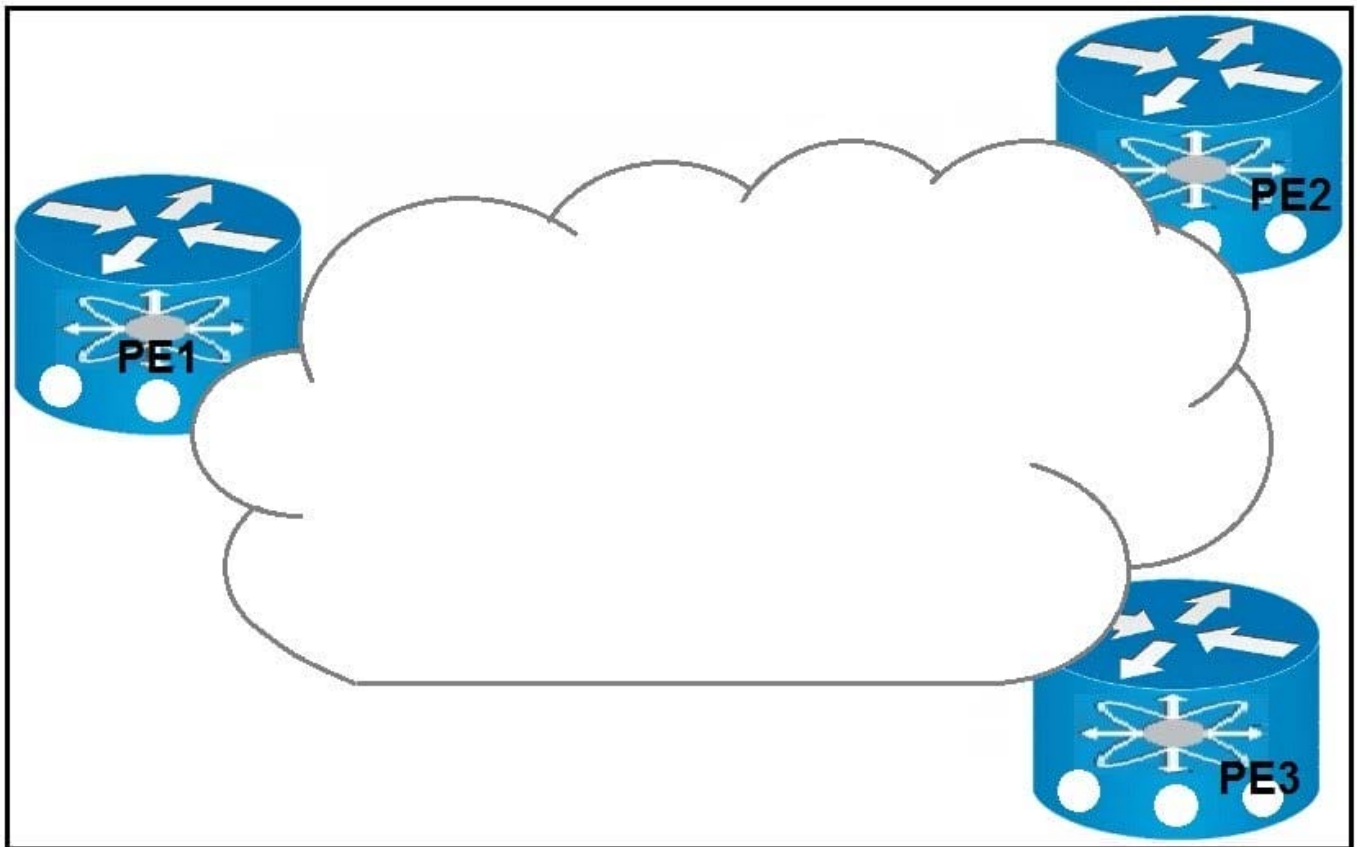
Which action caused this message?

- A. the entry of an inconsistent IP address and mask for VRF Selection
- B. an attempt to configure a VRF instance on an interface that already has VRF Selection configured
- C. an attempt to remove a VRF Selection entry that does not exist
- D. an attempt to configure a VRF Selection table that does not exist

Correct Answer: C

Reference: [https://www.cisco.com/c/en/us/td/docs/ios/12\\_2/12\\_2sz/feature/guide/122szvrf.html](https://www.cisco.com/c/en/us/td/docs/ios/12_2/12_2sz/feature/guide/122szvrf.html)

### QUESTION 10



Refer to the exhibit. Which result occurs when PE1 learns a new MAC address and all three PEs are enabled with EVPN native?



- A. A system notification is sent to the network administrator that triggers the manual configuration of the new MAC address on PE2 and PE3.
- B. The new MAC address is sent by BGP to PE2 and PE3 as a Type 2 BGP route.
- C. The MAC address is entered into the CAM table and is classified for use on the native VLAN
- D. The MAC address is entered into the CAM table only if it is learned on the native VLAN.

Correct Answer: B

Reference: [https://www.cisco.com/c/en/us/td/docs/routers/asr9000/software/asr9k-r6-4/lxvpn/configuration/guide/b-l2vpn-cg-asr9000-64x/b-l2vpn-cg-asr9000-64x\\_chapter\\_01011.html](https://www.cisco.com/c/en/us/td/docs/routers/asr9000/software/asr9k-r6-4/lxvpn/configuration/guide/b-l2vpn-cg-asr9000-64x/b-l2vpn-cg-asr9000-64x_chapter_01011.html)

### QUESTION 11

Refer to the exhibit.

```
Router 1:
vrf ciscotest
  address-family ipv4 unicast
    import route-target
      101:102
      301:202
    export route-target
      201:202
      401:402
```

An engineer has configured router 1 to provide shared services to clients behind router 2.

To complete the implementation so that routes from router 1 are accepted, what must the engineer configure on router 2?

- A. with import route targets 101:102 and 202:201
- B. with import route targets 201:202 and 401:402
- C. with export route targets 301:202 and 101:102
- D. with export route targets 201:202 and 401:402

Correct Answer: B

### QUESTION 12



**mdt default mpls mldp 2.2.2.2**

Refer to the exhibit. Which statement about this command is true?

- A. It must be configured on each PE router to enable the PE routers to receive multicast traffic for this particular MVRF.
- B. It is used to set the designated router on a link using PIM-SM.
- C. It must be configured on the PE and CE router to enable MP-BGP to send labels for CSC.
- D. It is used to set the router that will server as the root bridge for STP.

Correct Answer: A

Reference: <https://www.cisco.com/c/en/us/td/docs/routers/asr1000/configuration/guide/chassis/asrswcfg/lsmldp.html>

---

### QUESTION 13

How do PE routers exchange CE routes between remote sites?

- A. by converting CE routes into VPNv4 routes and exchanging them using MP-BGP
- B. by establishing BGP neighbor relationships between all connected CEs to exchange routing information
- C. by learning IPv4 routes from connected CEs and redistributing them into the global IGP
- D. by converting CE routes into VPNv4 routes and exchanging them using the global IGP

Correct Answer: A

[Latest 300-515 Dumps](#)

[300-515 VCE Dumps](#)

[300-515 Braindumps](#)