



300-620^{Q&As}

Implementing Cisco Application Centric Infrastructure (DCACI)

Pass Cisco 300-620 Exam with 100% Guarantee

Free Download Real Questions & Answers **PDF** and **VCE** file from:

<https://www.pass4itsure.com/300-620.html>

100% Passing Guarantee
100% Money Back Assurance

Following Questions and Answers are all new published by Cisco
Official Exam Center

-  **Instant Download** After Purchase
-  **100% Money Back** Guarantee
-  **365 Days** Free Update
-  **800,000+** Satisfied Customers



**QUESTION 1**

An engineer is creating a configuration import policy that must terminate if the imported configuration is incompatible with the existing system. Which import mode achieves this result?

- A. merge
- B. atomic
- C. best effort
- D. replace

Correct Answer: B

Reference: https://www.cisco.com/c/en/us/td/docs/switches/datacenter/aci/apic/sw/4-x/aci-fundamentals/Cisco-ACI-Fundamentals-401/Cisco-ACI-Fundamentals401_chapter_01011.html

QUESTION 2

Which two dynamic routing protocols are supported when using Cisco ACI to connect to an external Layer 3 network? (Choose two.)

- A. iBGP
- B. VXLAN
- C. IS-IS
- D. RIPv2
- E. eBGP

Correct Answer: AE

Reference:

https://www.cisco.com/c/en/us/td/docs/switches/datacenter/aci/apic/sw/1-x/ACI_Best_Practices/b_ACI_Best_Practices/b_ACI_Best_Practices_chapter_010010.html

QUESTION 3

Which protocol is used in a Multi-Pod topology to synchronize reachability information across pods?

- A. MP-BGP EVPN
- B. OSPF
- C. IS-IS
- D. COOP



Correct Answer: A

Each Pod connects to the IPN through the spine nodes, the IPN can be as simple as a single Layer 3 device or can be built with a larger Layer 3 network infrastructure like a Service Provider network.

Since each Pod is running a separate instance of the COOP protocol, this implies that information about discovered endpoints (MAC, IPv4/IPv6 addresses, and their location) is only exchanged using COOP as a control plane protocol between the leaf and spine nodes locally deployed in each Pod.

ACI Multi-Pod functions as a single fabric, so, it is key to ensure that the databases implemented in the spine nodes across Pods have a consistent view of the endpoints connected to the fabric, this requires the deployment of an overlay control plane running between the spines and used to exchange endpoint reachability information. Multi-Protocol BGP has been chosen for this function. This is due to the flexibility and scalability properties of this protocol and its support of different address families (like EVPN and VPNv4) allowing the exchange of Layer 2 and Layer 3 information in a true multi-tenant fashion.

QUESTION 4

When Cisco ACI connects to an outside Layers 2 network, where does the ACI fabric flood the STP BPDU frame?

- A. within the bridge domain
- B. within the APIC
- C. within the access encap VLAN
- D. between all the spine and leaf switches

Correct Answer: C

The ACI fabric is an IP-based fabric that implements an integrated overlay, allowing any subnet to be placed anywhere in the fabric and supports a fabric-wide mobility domain for virtualized workloads. STP is not required within the ACI fabric and leaf. The spine and APIC don't run STP instances.

When connecting to an outside layer 2 network, the ACI fabric floods the STP BPDU frame within the boundary of the EPG. External switches are expected to break any potential loop upon receiving the flooded BPDU from the ACI fabric. Figure 69 depicts this process.

QUESTION 5

Which routing protocol is supported between Cisco ACI spines and IPNs in a Cisco ACI Multi-Pod environment?

- A. OSPF
- B. IS-IS
- C. BGP
- D. EIGRP

Correct Answer: A

**QUESTION 6**

An engineer must set up a Cisco ACI fabric to send Syslog messages related to hardware events, such as chassis line card failures. The messages should be sent to a dedicated Syslog server. Where in the Cisco APIC should the policy be configured to meet this requirement?

- A. uni/tn-common/monepg-default
- B. uni/infra/monifra-default
- C. uni/fabric/monfab-default
- D. uni/fabric/moncommon

Correct Answer: C

QUESTION 7

In the context of ACI Multi-Site, when is the information of an endpoint (MAC/IP) that belongs to site 1 advertised to site 2 using the EVPN control plane?

- A. Endpoint information is not exchanged across sites unless COOP protocol is used.
- B. Endpoint information is not exchanged across sites unless a policy is configured to allow communication across sites.
- C. Endpoint information is exchanged across sites as soon as the endpoint is discovered in one site.
- D. Endpoint information is exchanged across sites when the endpoints are discovered in both sites.

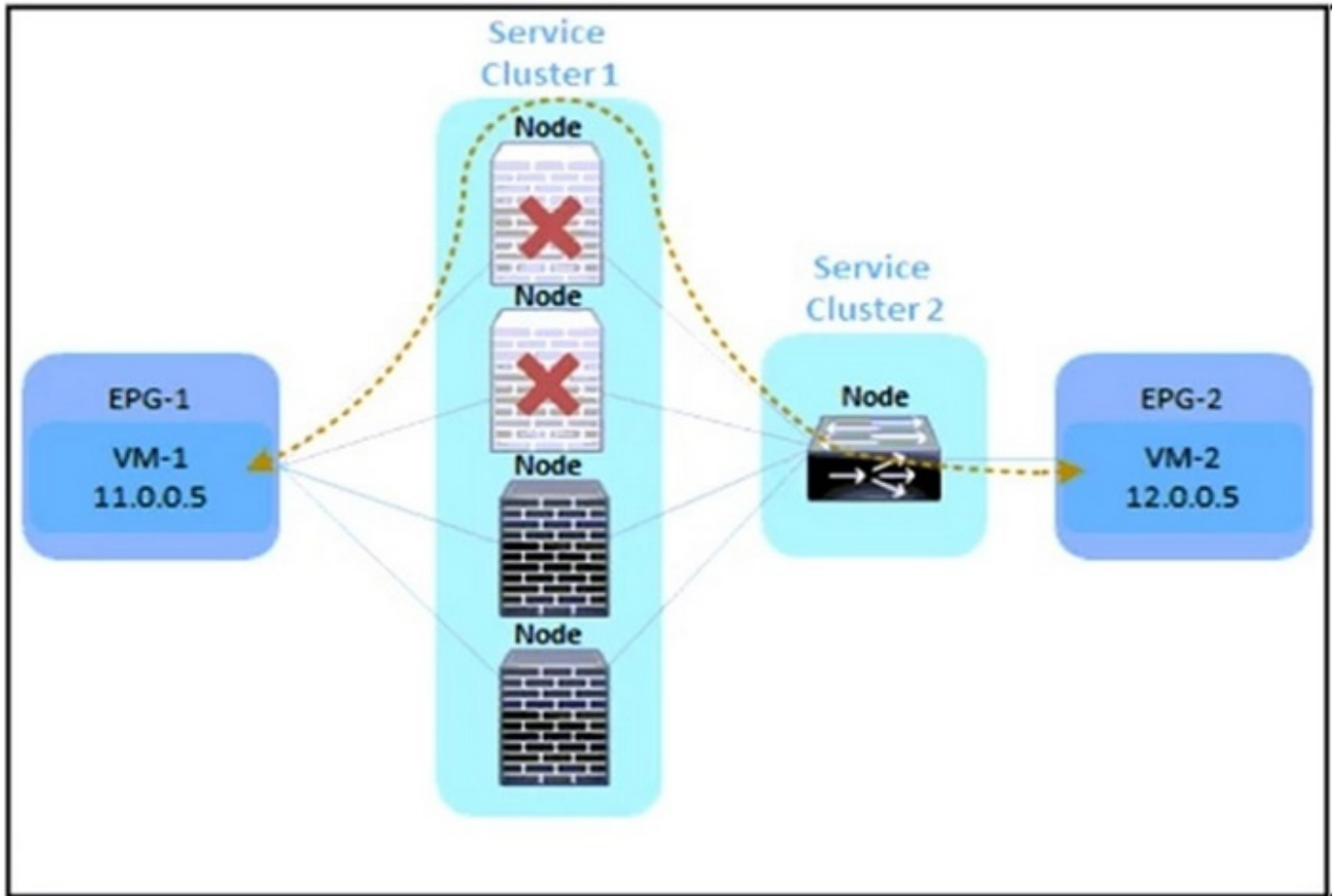
Correct Answer: B

The endpoint information is stored in the local COOP database. Spine nodes in site 1 know about locally connected endpoints, and the same is true for spine nodes in site 2. Note that at this point no information is exchanged across sites for EP1 and EP2 EPGs, because there is no policy in place yet indicating a need for those endpoints to communicate.

An intersite policy is defined in Cisco ACI Multi-Site Orchestrator and is then pushed and rendered in the two sites.

QUESTION 8

Refer to the exhibit.



An engineer must divert the traffic between VM-1 and VM-2 by using a Multi-Node service graph. The solution should prevent an insufficient number of available Layer 4 to Layer 7 devices in the first cluster. Which configuration set accomplishes this goal?

- A. PBR node tracking tracking threshold with action bypass symmetric PBR resilient hashing
- B. PBR node tracking tracking threshold with action permit unidirectional PBR resilient hashing
- C. PBR node tracking tracking threshold with action permit symmetric PBR resilient hashing
- D. PBR node tracking tracking threshold with action deny symmetric PBR unidirectional PBR

Correct Answer: C

1.

PBR node tracking: This allows PBR to track the status of the Layer 4 to Layer 7 devices in the service graph.

2.

Tracking threshold with action permit: This sets the threshold for device availability and permits traffic redirection to the available devices.

3.

Symmetric PBR: This ensures that both inbound and outbound traffic is redirected through the same set of Layer 4 to Layer 7 devices in the service graph.



4.

Resilient hashing: This load-balancing algorithm ensures that traffic is distributed evenly across all available devices, preventing any one device from becoming overloaded.

QUESTION 9

An engineer is implementing an out-of-band (OOB) management access for the Cisco ACI fabric. The secure access must meet these requirements:

Only GUI and secure shell must be allowed to access the management interfaces of the ACIs.

The only IP ranges that must be permitted to connect the fabric will be 10.10.10.0/24 and 192.168.15.0/24.

Which configuration set meets these requirements?

- A. Implement HTTPS and SSH protocol filters in the OOB contract. Add the required subnets to the external network instance profile.
- B. Set up static IPs on the management interfaces from the required IP range. Add the required subnets to the external network instance profile.
- C. Create an out-of-band EPG in the external management entity. Associate the management profile with the OOB contract.
- D. Create an out-of-band EPG in the common tenant. Associate the external network instance profile with the OOB contract.

Correct Answer: A

Tenants > mgmt > Contracts > Out Of Band Contracts, apply in provided direction to Node Management EPG Tenants > mgmt > External Management Network Instance Profiles -> apply the contract in consumed direction and add subnets Make sure HTTPS and SSH are enabled in Fabric > Fabric Policies > Policies > Pod > Management Access

QUESTION 10

DRAG DROP

An engineer must configure VMM domain integration on a Cisco UCS B-Series server that is connected to a Cisco ACI fabric. Drag and drop the products used to create VMM domain from the bottom into the sequence in which they should be implemented at the top. Products are used more than once.

Select and Place:



On the interface, create a dynamic VLAN pool.
On the interface, create a VMware vCenter domain.
On the interface, create a vCenter/vShield controller.
On the user interface, verify that the VMware vDS is created.

Correct Answer:

On the interface, create a dynamic VLAN pool.
On the interface, create a VMware vCenter domain.
On the interface, create a vCenter/vShield controller.
On the user interface, verify that the VMware vDS is created.

QUESTION 11

A Cisco ACI fabric is experiencing packet loss that originates from a bare metal server. The engineer must configure the syslog service to meet these requirements:

1.

The ACI syslog information must be collected with logging information from other network devices.

2.

The monitoring must only be performed on leaf 103 and leaf 104.

Which set of actions accomplishes these goals?

A. Configure the Syslog Monitoring Destination Group to remote server logging. Create an Access Monitoring policy for ingress and egress packet drops. Apply the Monitoring policy to the appropriate Switch Profile group.

B. Configure the Syslog Monitoring Destination Group to Console logging. Create a Fabric-Wide Monitoring policy for ingress packet drops. Apply the Monitoring policy to the appropriate Switch Profile group.

C. Configure the Syslog Monitoring Destination Group to Local File logging. Create a Fabric Monitoring policy for ingress and egress bytes. Apply the Monitoring policy to the appropriate Switch Profile group.

D. Configure the Syslog Monitoring Destination Group to Console logging. Create an Access Monitoring policy for egress packet drops. Apply the Monitoring policy to the appropriate Switch Profile group.

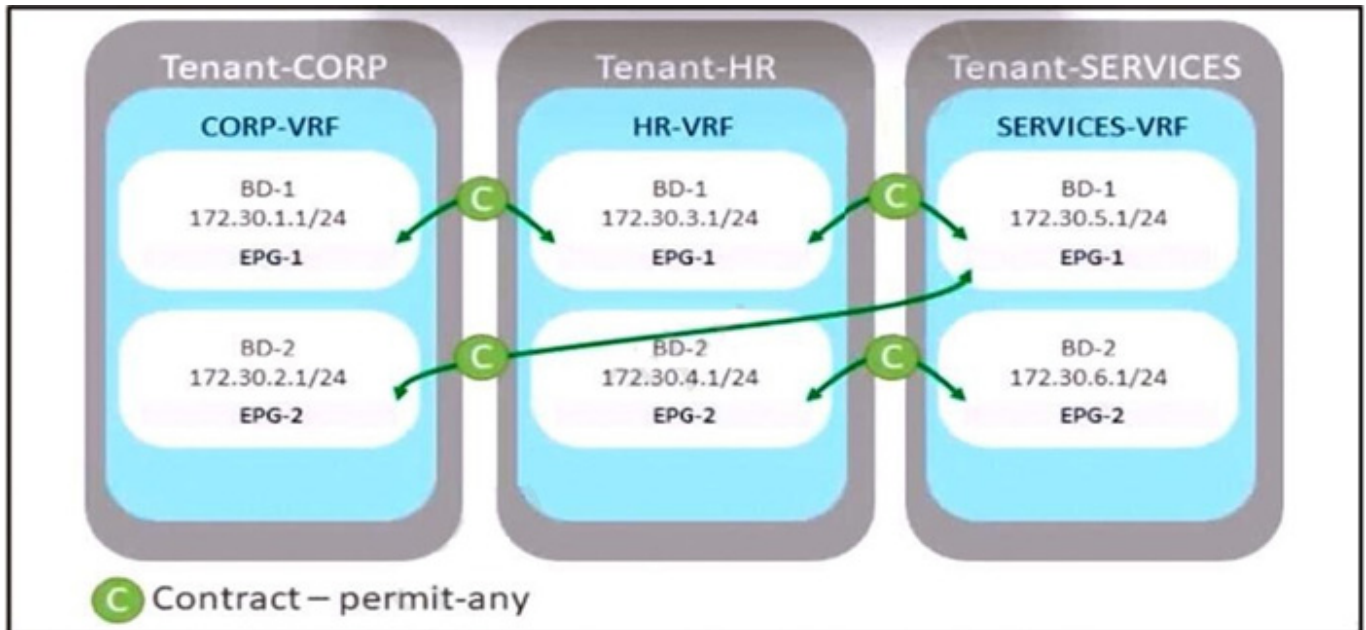


Correct Answer: A

"The ACI syslog information must be collected with logging information from other network devices" could refer to a syslog server, so no local or console, but remote syslog server

QUESTION 12

Refer to the exhibit.



A company merges three of its departments: CORP, HR, and SERVICES, Currently, the connectivity between departments is achieved by using VRF route leaking. The requirement is to redesign the Cisco ACI networking architecture to communicate between EPGs and BDs from any tenant without configuring contracts or VRF route leaking. Which configuration meets these criteria?

- A. Configure an unenforced VRF in the user tenant and map all required EPGs to it.
- B. Implement an enforced VRF in the common tenant and map all required BDs to it.
- C. Configure an enforced VRF in the user tenant and map all required EPGs to it.
- D. Implement an unenforced VRF in the common tenant and map all required BDs to it.

Correct Answer: D

https://www.cisco.com/c/en/us/td/docs/switches/datacenter/aci/apic/sw/4-x/basic-configuration/Cisco-APIC-Basic-Configuration-Guide-42x/Cisco-APIC-Basic-Configuration-Guide-42x_chapter_0110.htm

ensure a scalable solution when multiple EPGs in a VRF require unrestricted communication VRF policy control enforcement preference to Unenforced EPGs that require unrestricted communication between each other as preferred group members

QUESTION 13



An engineer must create a backup of the Cisco ACI fabric for disaster recovery purposes. The backup must be transferred over a secure and encrypted transport. The backup file must contain all user and password related information. The engineer also wants to process and confirm the backup file validity by using a Python script. This requires the data structure to have a format similar to a Python dictionary. Which configuration set must be used to meet these requirements?

A. Under the Create Remote location settings, select Protocol: FTP Under the Export policy, select

-Format: XML

-Modify Global AES Encryption Settings: Enabled

B. Under the Create Remote location settings, select Protocol: FTP Under the Export policy, select

-Format: XML

-Modify Global AES Encryption Settings: Disabled

C. Under the Create Remote location settings, select Protocol: SCP Under the Export policy, select

-Format: JSON

-Modify Global AES Encryption Settings: Disabled

D. Under the Create Remote location settings, select Protocol: SCP Under the Export policy, select

-Format: JSON

-Modify Global AES Encryption Settings: Enabled

Correct Answer: D

[Latest 300-620 Dumps](#)

[300-620 VCE Dumps](#)

[300-620 Practice Test](#)