



350-401^{Q&As}

Implementing and Operating Cisco Enterprise Network Core Technologies (ENCOR) & CCIE Enterprise Infrastructure & CCIE Enterprise Wireless





Pass Cisco 350-401 Exam with 100% Guarantee

Free Download Real Questions & Answers **PDF** and **VCE** file from:

<https://www.pass4itsure.com/350-401.html>

100% Passing Guarantee
100% Money Back Assurance

Following Questions and Answers are all new published by Cisco Official Exam Center

-  **Instant Download** After Purchase
-  **100% Money Back** Guarantee
-  **365 Days** Free Update
-  **800,000+** Satisfied Customers





QUESTION 1

Which configuration enables a device to be configured via NETCONF over SSHv2?



- A.
- ```
hostname Device
!
username admin password 0 admin
!
ip domain-name cisco.com
crypto key generate rsa modulus 2048
ip ssh version 2
!
netconf-yang
!
line vty 0 15
login local
```
- B.
- ```
hostname Device
!
aaa new-model
!
username cisco privilege 15 password cisco
!
ip domain-name cisco.com
crypto key generate rsa modulus 2048
ip ssh version 2
!
aaa authentication login default local
aaa authorization exec default local
!
netconf-yang
netconf ssh
```
- C.
- ```
hostname Device
!
aaa new-model
!
username admin privilege 15 password 0 admin
!
ip domain-name cisco.com
crypto key generate rsa modulus 2048
ip ssh version 2
!
netconf-yang
```
- D.
- ```
hostname Device
!
username cisco1 privilege 15 password 0 cisco1
!
ip domain-name cisco.com
crypto key generate rsa modulus 2048
ip ssh version 2
!
netconf ssh
!
line vty 0 15
login local
```
-



- A. Option A
- B. Option B
- C. Option C
- D. Option D

Correct Answer: C

QUESTION 2

What does the LAP send when multiple WLCs respond to the CISCO-CAPWAP-CONTROLLER.localdomain hostname during the CAPWAP discovery and join process?

- A. unicast discovery request to the first WLC that resolves the domain name
- B. broadcast discovery request
- C. join request to all the WLCs
- D. unicast discovery request to each WLC

Correct Answer: D

<https://www.cisco.com/c/en/us/support/docs/wireless/4400-series-wireless-lan-controllers/107606-dns-wlc-config.html#anc5>

QUESTION 3

Refer to the exhibit. Which two facts does the device output confirm? (Choose two)

```
Vlan503 - Group 1
  State is Active
    1 state change, last state change 32w6d
  Virtual IP address is 10.0.3.241
  Active virtual MAC address is 0000.0c07.ac01
    Local virtual MAC address is 0000.0c07.ac01 (v1 default)
  Hello time 3 sec, hold time 10 sec
    Next hello sent in 0.064 secs
  Preemption enabled
  Active router is local
  Standby router is 10.0.3.242, priority 100 (expires in 10.624 sec)
  Priority 110 (configured 110)
  Group name is "hsrp-V1503-1" (default)
```

- A. The device is using the default HSRP hello timer
- B. The standby device is configured with the default HSRP priority
- C. The device's HSRP group uses the virtual IP address 10.0.3.242.



- D. The device is configured with the default HSRP priority
- E. The device sends unicast messages to its peers

Correct Answer: AD

hsrp uses multicast: 224.0.0.2 v1, 224.0.0.102 v2, 224.0.0.18 vrrp. default hsrp hello time is 3 sec, hold timer is 10 sec

QUESTION 4

Which security option protects credentials from sniffer attacks in a basicAPI authentication?

- A. next-generation firewall
- B. TLS or SSL for communication
- C. VPN connection between client and server
- D. AAA services to authenticate the API

Correct Answer: B

QUESTION 5

Refer to the exhibit. The administrator troubleshoots an EtherChannel that keeps moving to err-disabled. Which two actions must be taken to resolve the issue? (Choose two.)

```
Cat3650# show logging
[ ... cut ... ]
*Sep 11 19:06:25.595: %PM-4-ERR_DISABLE: channel-misconfig error detected on Po1, putting Gi1/0/2
in err-disable state
*Sep 11 19:06:25.606: %PM-4-ERR_DISABLE: channel-misconfig error detected on Po1, putting Gi1/0/3
in err-disable state
*Sep 11 19:06:25.622: %PM-4-ERR_DISABLE: channel-misconfig error detected on Po1, putting Po1 in
err-disable state

Cat3650# show etherchannel summary
[ ... cut ... ]
Group Port-channel Protocol Ports
-----
1      Po1(SD)          -      Gi1/0/2(D) Gi1/0/3(D)

Cat3650# show interface status err-disabled
Port      Name      Status      Reason      Err-disabled Vlans
-----
Gi1/0/2   Po1       err-disabled channel-misconfig
Gi1/0/3   Po1       err-disabled channel-misconfig
Po1       Po1       err-disabled channel-misconfig
```

- A. Reload the switch to force EtherChannel renegotiation



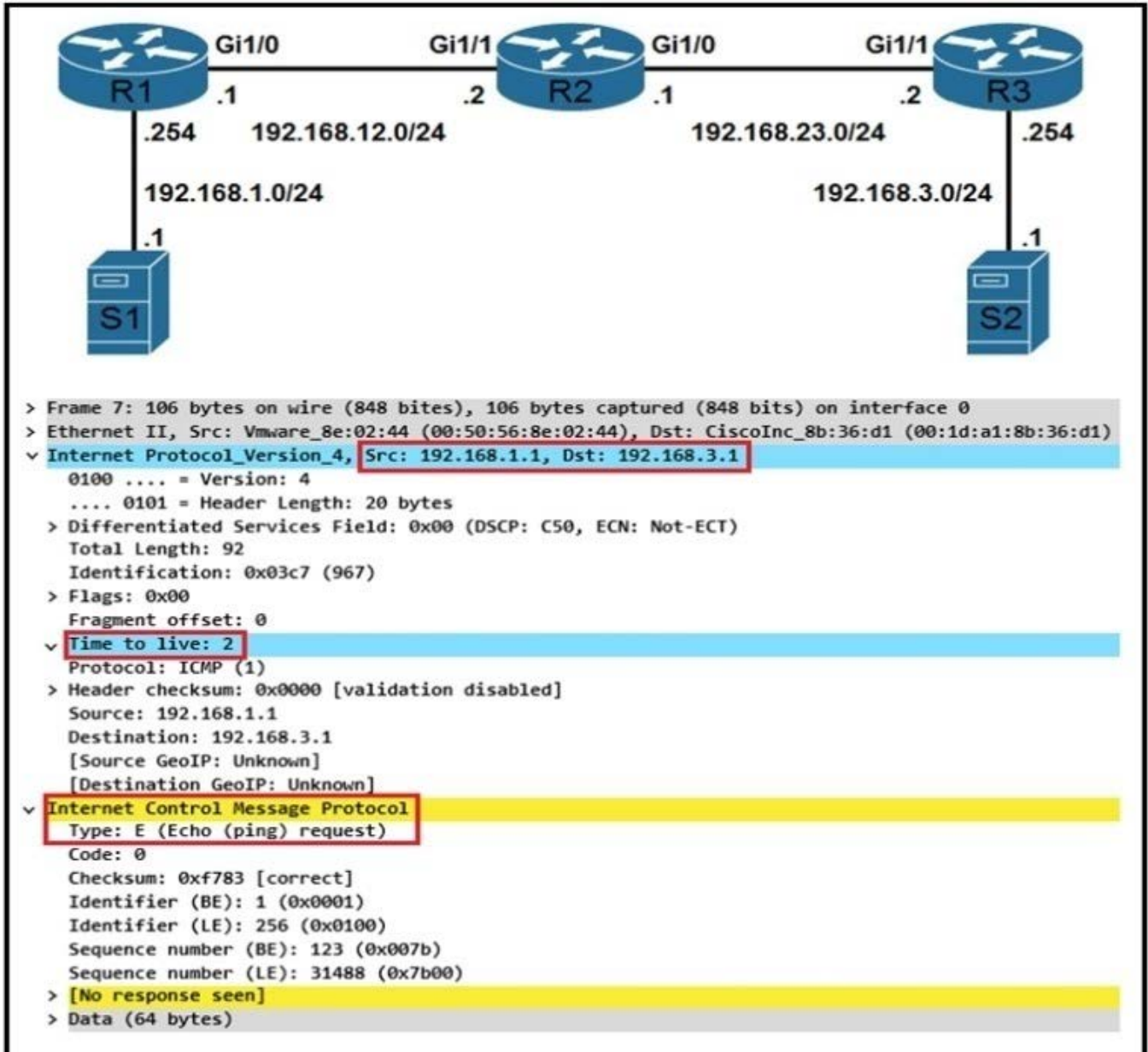
- B. Ensure that interfaces Gi1/0/2 and Gi1/0/3 connect to the same neighboring switch.
- C. Ensure that the switchport parameters of Port channel1 match the parameters of the port channel on the neighbor switch
- D. Ensure that the corresponding port channel interface on the neighbor switch is named Portchannel1.
- E. Ensure that the neighbor interfaces of Gi1/0/2 and Gi/0/3 are configured as members of the same EtherChannel

Correct Answer: BE

This feature was first implemented in order to handle special collision situations in which the switch detected excessive or late collisions on a port. Excessive collisions occur when a frame is dropped because the switch encounters 16 collisions in a row. Late collisions occur after every device on the wire should have recognized that the wire was in use. Possible causes of these types of errors include: A cable that is out of specification (either too long, the wrong type, or defective) A bad network interface card (NIC) card (with physical problems or driver problems) A port duplex misconfiguration is a common cause of the errors because of failures to negotiate the speed and duplex properly between two directly connected devices (for example, a NIC that connects to a switch). Only half-duplex connections should ever have collisions in a LAN. Because of the carrier sense multiple access (CSMA) nature of Ethernet, collisions are normal for half duplex, as long as the collisions do not exceed a small percentage of traffic.

QUESTION 6

Refer to the exhibit.



Which troubleshooting a routing issue, an engineer issues a ping from S1 to S2. When two actions from the initial value of the TTL? (Choose two.)

- A. The packet reaches R3, and the TTL expires
- B. R2 replies with a TTL exceeded message
- C. R3 replies with a TTL exceeded message.
- D. The packet reaches R2, and the TTL expires.
- E. R1 replies with a TTL exceeded message
- F. The packet reaches R1 and the TTL expires.

Correct Answer: BD



When a labeled packet is received with a TTL of 1, the receiving LSR drops the packet and sends an ICMP message "time exceeded" (type 11, code 0) to the originator of the IP packet. This is the same behavior that a router would exhibit with an IP packet that had an expiring TTL.

https://www.cisco.com/c/en/us/td/docs/wireless/controller/7-4/configuration/guides/consolidated/b_cg74_CONSOLIDATED/b_cg74_CONSOLIDATED_chapter_010111000.html#:~:text=The%20local%20and%20FlexConnect%20mode%20access%20points,spend%20about%2050%20milliseconds%20on%20each%20channel.

QUESTION 7

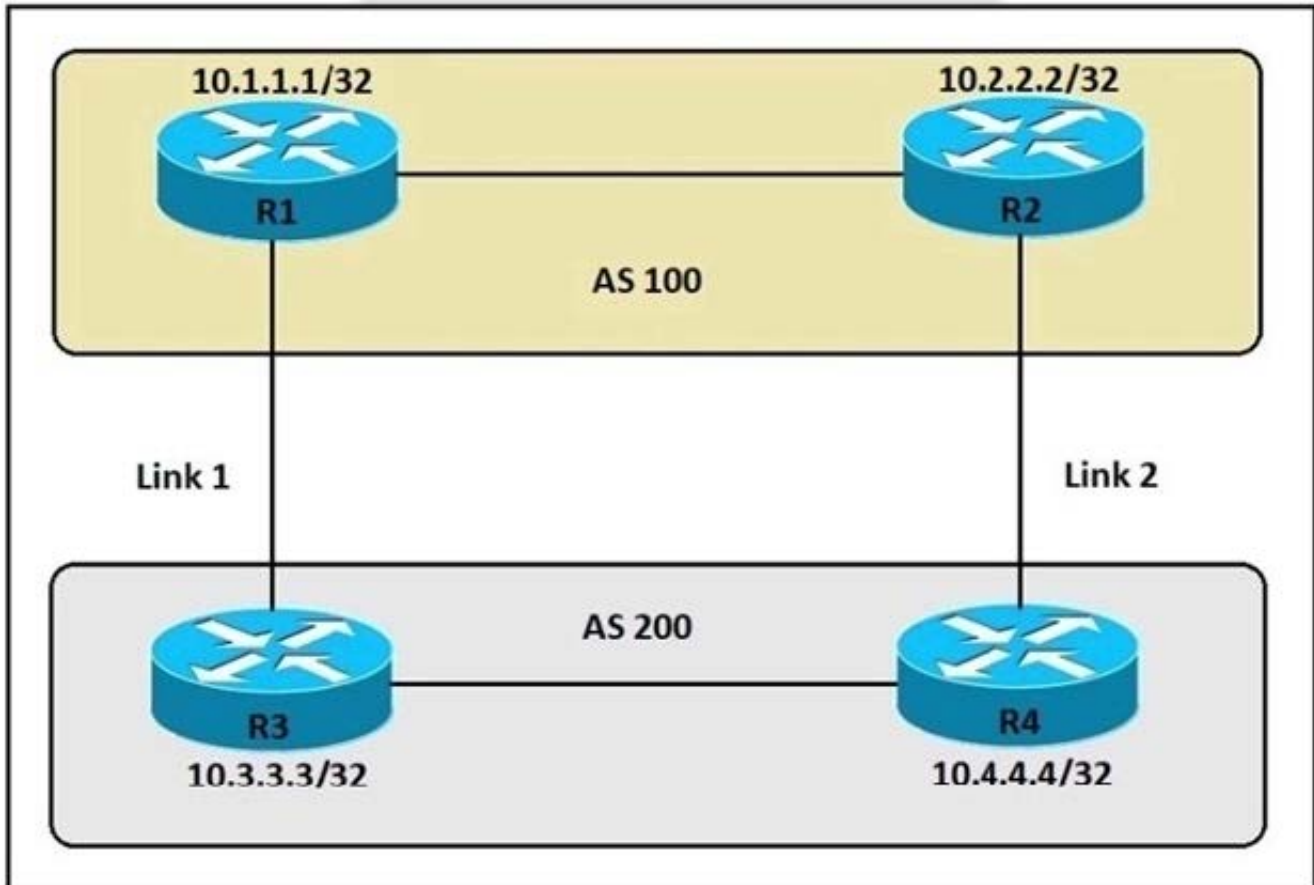
What occurs when a high bandwidth multicast stream is sent over an MVPN using Cisco hardware?

- A. The traffic uses the default MDT to transmit the data only if it is a (S,G) multicast route entry.
- B. A data MDT is created to if it is a (*, G) multicast route entries.
- C. A data and default MDT are created to flood the multicast stream out of all PIM-SM neighbors.
- D. A data MDT is created to allow for the best transmission through the core for (S, G) multicast route entries.

Correct Answer: D

QUESTION 8

Refer to the exhibit. An engineer must ensure that all traffic entering AS 200 from AS 100 chooses Link 2 as an entry point. Assume that all BGP neighbor relationships have been formed and that the attributes have not been changed on any of the routers. Which configuration accomplishes this task?



- A. R4(config)#route-map PREPEND permit 10 R4(config-route-map)#set as-path prepend 200 200 200
R4(config)#router bgp 200 R4(config-router)#neighbor 10.2.2.2 route-map PREPEND out
- B. R3(config)#route-map PREPEND permit 10 R3(config-route-map)#set as-path prepend 200 200 200
R3(config)#router bgp 200 R3(config-router)#neighbor 10.1.1.1 route-map PREPEND out
- C. R4(config)#route-map PREPEND permit 10 R4(config-route-map)#set as-path prepend 100 100 100
R4(config)#router bgp 200 R4(config-router)#neighbor 10.2.2.2 route-map PREPEND in
- D. R3(config)#route-map PREPEND permit 10 R3(config-route-map)#set as-path prepend 100 100 100
R3(config)#router bgp 200 R3(config-router)#neighbor 10.2.2.2 route-map PREPEND in

Correct Answer: B

QUESTION 9

Which of the following are true statements regarding the Virtual Router Redundancy Protocol (VRRP) feature? (Choose two.)

- A. Pre-emption is enabled by default
- B. The router priority is a configurable value from 0-4095
- C. MD5 authentication is supported with VRRP
- D. Secondary IP addresses are supported with VRRP



E. VRRP can only be used with Cisco devices

Correct Answer: CD

in every cisco documents is referenced "Preemption" or "preempt" NOT pre-emption.

so i go with C and D

Multiple IP Addresses

The virtual router can manage multiple IP addresses, including secondary IP addresses.

Authentication

VRRP message digest 5 (MD5) algorithm authentication protects against VRRP-spoofing software and uses the industry-standard MD5 algorithm for improved reliability and security.

QUESTION 10

```
%PM-4-ERR_DISABLE: channel-misconfig (STP) error detected on Po2, putting Et0/1 in err-disable state
FEC: pagp_switch_hotstandby: for agport Po2
FEC: pagp_switch_hotstandby: PAgP not enabled on agport Po2
FEC: pagp_switch_port_down: Et0/1 Inform no
FEC: pagp_switch_invoke_port_down: Et0/1
FEC: fec_unbundle: Et0/1
FEC: pagp_switch_change_vgc: gcchngrq == 0 for Et0/1
FEC: pagp_switch_change_vgc: Et0/1 gcchngrq = 0 gc = 0
FEC: pagp_switch_delete_port_from_agport_internal: delete_port_from_agport: for port Et0/1
FEC: delete port (Et0/1) from agport (Po2)
FEC: pagp_switch_delete_port_from_agport_list: afb->nports-- = 1 [Et0/1]
FEC: Un-Bndl msg NOT send to PM for port Et0/1 from Po2
FEC: pagp_switch_reset_load_index: reading load-index for port Po2
FEC: fec_set_agport_macaddr: Po2 Et0/1 (remove)
FEC: coerce_hwaddr_unix: get aabb.cc00.2020 for L2 Po2 from Et0/2
FEC: coerce_hwaddr_unix: set aabb.cc00.2020 for Po2, 1/1
```

Refer to the exhibit. After unsuccessfully configuring an EtherChannel link, an engineer enables debugging. Which action will resolve the issue?

- A. Configure the EtherChannel members in desirable mode.
- B. Set the EtherChannel to mode on.
- C. Set the EtherChannel to mode active.
- D. Configure the EtherChannel members in passive mode.

Correct Answer: C

QUESTION 11

What is a characteristic of the Cisco DMA Center Template Editor feature?



- A. It facilitates software upgrades to network devices from a central point.
- B. It facilitates a vulnerability assessment of the network devices.
- C. It provides a high-level overview of the health of every network device.
- D. It uses a predefined configuration through parameterized elements or variables.

Correct Answer: D

QUESTION 12

Refer to the exhibit. The trunk does not work over the back-to-back link between Switch1 interface Gi1/0/20 and Switch2 interface Gi1/0/20. Which configuration fixes the problem?

```
Switch1# show interfaces trunk
! Output omitted for brevity
Port Mode Encapsulation Status Native
Gi1/0/20 auto 802.1q trunking 10

Port Vlans allowed on trunk
Gi1/0/20 1-4094

Switch2# show interfaces trunk
! Output omitted for brevity
Port Mode Encapsulation Status Native
Gi1/0/20 auto 802.1q trunking 10

Port Vlans allowed on trunk
Gi1/0/20 1-4094
```

- A. Switch 1(config)#interface gig1/0/20 Switch 1(config-if)#switchport mode dynamic auto
- B. Switch(config)#interface gig1/0/20 Switch(config-if)#switchport mode dynamic desirable
- C. Switch 1(config)#interface gig1/0/20 Switch1(config-if)#switchport trunk native vlan 1 Switch2(config)#interface gig1/0/20 Switch2(config-if)#switchport trunk native vlan 1
- D. Switch(config)#interface gig1/0/20 Switch2(config-if)#switchport mode dynamic auto

Correct Answer: B

QUESTION 13



DRAG DROP

Drag and drop the definitions on the left to their respective technological names on the right.

Select and Place:



one of many values depending on which wireless standard you are connecting with

measurement of power in an RF signal

how much power a WLAN device is using to maintain the connection

how much stronger the wireless signal is compared to the noise floor surrounding the WLAN client

RSSI

SNR

Data Rate

Power level



Correct Answer:



measurement of power in an RF signal

how much stronger the wireless signal is compared to the noise floor surrounding the WLAN client

one of many values depending on which wireless standard you are connecting with

how much power a WLAN device is using to maintain the connection



VCE & PDF

Pass4itSure.com

<https://www.pass4itsure.com/350-401.html>

2024 Latest pass4itsure 350-401 PDF and VCE dumps Download

[350-401 PDF Dumps](#)

[350-401 Practice Test](#)

[350-401 Exam Questions](#)