



# 350-501<sup>Q&As</sup>

Implementing and Operating Cisco Service Provider Network Core Technologies (SPCOR)

## Pass Cisco 350-501 Exam with 100% Guarantee

Free Download Real Questions & Answers **PDF** and **VCE** file from:

<https://www.pass4itsure.com/350-501.html>

100% Passing Guarantee  
100% Money Back Assurance

Following Questions and Answers are all new published by Cisco  
Official Exam Center

-  **Instant Download** After Purchase
-  **100% Money Back** Guarantee
-  **365 Days** Free Update
-  **800,000+** Satisfied Customers





### QUESTION 1

A customer has requested that the service provider use a Cisco MPLS TE tunnel to force the E-line service to take a specific route. What is used to send the traffic over the tunnel?

- A. static route
- B. preferred path
- C. forwarding adjacency
- D. autoroute destination

Correct Answer: B

---

### QUESTION 2

An engineer is setting up overlapping VPNs to allow VRF ABC and XYZ to communicate with VRF CENTRAL but wants to make sure that VRF ABC and XYZ cannot communicate. Which configuration accomplishes these objectives?



```
A.
vrf ABC
  address-family ipv4 unicast
    import route-target
      65000:1111
      65000:4444
    !
    export route-target
      65000:1111
      65000:3333
    !
vrf XYZ
  address-family ipv4 unicast
    import route-target
      65000:2222
      65000:4444
    !
    export route-target
      65000:2222
      65000:3333
    !
vrf CENTRAL
  address-family ipv4 unicast
    import route-target
      65000:3333
    !
    export route-target
      65000:4444
    !

B.
vrf ABC
  address-family ipv4 unicast
    import route-target
      65000:1111
    !
    export route-target
      65000:1111
    !
vrf XYZ
  address-family ipv4 unicast
    import route-target
      65000:2222
    !
    export route-target
      65000:2222
      65000:1111
    !
vrf CENTRAL
  address-family ipv4 unicast
    import route-target
      65000:3333
      65000:1111
      65000:2222
    !
    export route-target
      65000:3333
      65000:1111
      65000:2222
```



```
C.
vrf ABC
  address-family ipv4 unicast
    import route-target
      65000:1111
      65000:4444
    !
    export route-target
      65000:1111
      65000:3333
    !
vrf XYZ
  address-family ipv4 unicast
    import route-target
      65000:2222
      65000:3333
    !
    export route-target
      65000:2222
      65000:4444
    !
vrf CENTRAL
  address-family ipv4 unicast
    import route-target
      65000:3333
    !
    export route-target
      65000:4444
    !

D.
vrf ABC
  address-family ipv4 unicast
    import route-target
      65000:1111
      65000:3333
    !
    export route-target
      65000:1111
      65000:3333
    !
vrf XYZ
  address-family ipv4 unicast
    import route-target
      65000:2222
      65000:3333
    !
    export route-target
      65000:2222
      65000:3333
    !
vrf CENTRAL
  address-family ipv4 unicast
    import route-target
      65000:3333
    !
    export route-target
      65000:3333
    !
```



- A. Option A
- B. Option B
- C. Option C
- D. Option D

Correct Answer: A

---

### QUESTION 3

A router RP is configured to perform MPLS LDP graceful restart.

Which three steps are included when the RP sends an LDP initialization message to a neighbor to establish an LDP session? (Choose three.)

- A. Learn from Neighbor (N) flag, set to 1
- B. Recovery Time field
- C. Type-9 LSA
- D. Reconnect Timeout field
- E. Graceful restart capability in OPEN message
- F. Learn from Network (L) flag, set to 1

Correct Answer: BDF

Reference: [https://www.cisco.com/c/en/us/td/docs/ios-xml/ios/mp\\_ha/configuration/xr-16-8/mp-ha-xr-16-8-book/nsf-ssompls-ldp-and-ldp-graceful-restart.html](https://www.cisco.com/c/en/us/td/docs/ios-xml/ios/mp_ha/configuration/xr-16-8/mp-ha-xr-16-8-book/nsf-ssompls-ldp-and-ldp-graceful-restart.html)

---

### QUESTION 4

An engineer working for a private service provider with employee Id: 1234:56:789 is configuring a Cisco device to redistribute OSPF into BGP. Which task enables the device to filter routes?

- A. Configure an access list and reference it with the redistribute command.
- B. Configure a route map and reference it with the redistribute command.
- C. Configure a prefix list and associate it to the BGP peer interface.
- D. Configure a distribute list and associate it to the BGP peer interface.

Correct Answer: B

---



### QUESTION 5

Which protocol is used to convey configuration information to cable modems in a DOCSIS network?

- A. DHCP
- B. RPC
- C. NETCONF
- D. TFTP

Correct Answer: D

### QUESTION 6

DRAG DROP

Drag and drop the BGP Best Path Algorithm rules from the left into the corresponding order of importance on the right.

Select and Place:

|   | Most important  |
|---|-----------------|
| route with the shortest AS_PATH         |                 |
| route with the lowest MED               |                 |
| route with the highest weight           |                 |
| route with the lowest origin type       |                 |
| route with the highest local preference |                 |
|   | Least important |

Correct Answer:





Most important

route with the highest weight

route with the highest local preference

route with the shortest AS\_PATH

route with the lowest origin type

route with the lowest MED

Least important



### QUESTION 7

DRAG DROP

Drag and drop each NAT64 description from the left onto the correct NAT64 type on the right.

Select and Place:

### Answer Area

It is limited on the number of endpoints.

It uses address overloading.

It conserves IPv4 addresses.

It mandates IPv4-translatable IPv6 address allocation.

It has 1:N translation.

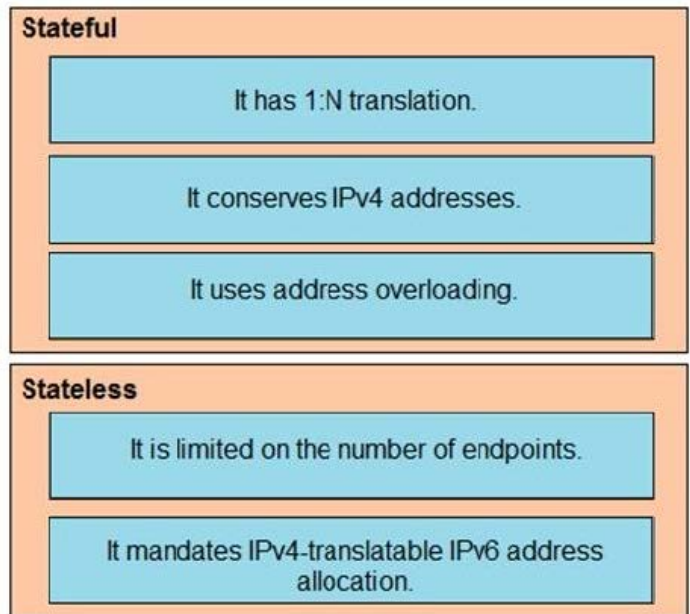
#### Stateful

#### Stateless

Correct Answer:



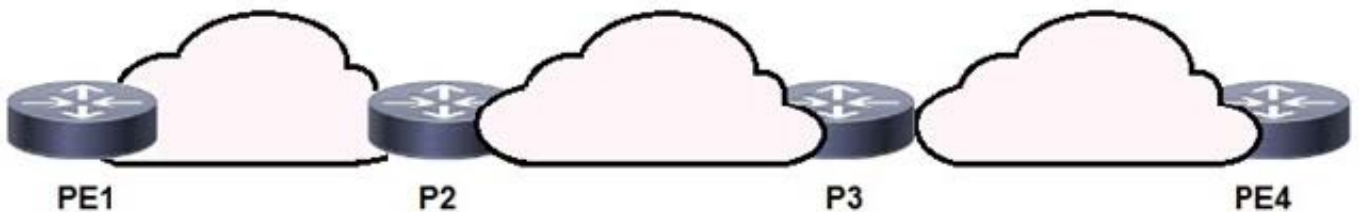
## Answer Area

Reference: [https://www.cisco.com/c/en/us/products/collateral/ios-nx-os-software/enterprise-ipv6-solution/white\\_paper\\_c11-676277.html](https://www.cisco.com/c/en/us/products/collateral/ios-nx-os-software/enterprise-ipv6-solution/white_paper_c11-676277.html)

## QUESTION 8

Refer to the exhibit



P3 and PE4 are at the edge of the service provider core and serve as ABR routers. Aggregation areas are on either side of the core. Which statement about the architecture is true?

- A. To support seamless MPLS, the BGP route reflector feature must be disabled.
- B. If each area is running its own IGP, BGP must provide an end-to-end MPLS LSP.
- C. If each area is running its own IGP, the ABR routers must redistribute the IGP routing table into BGP.
- D. To support seamless MPLS, TDP must be used as the label protocol.

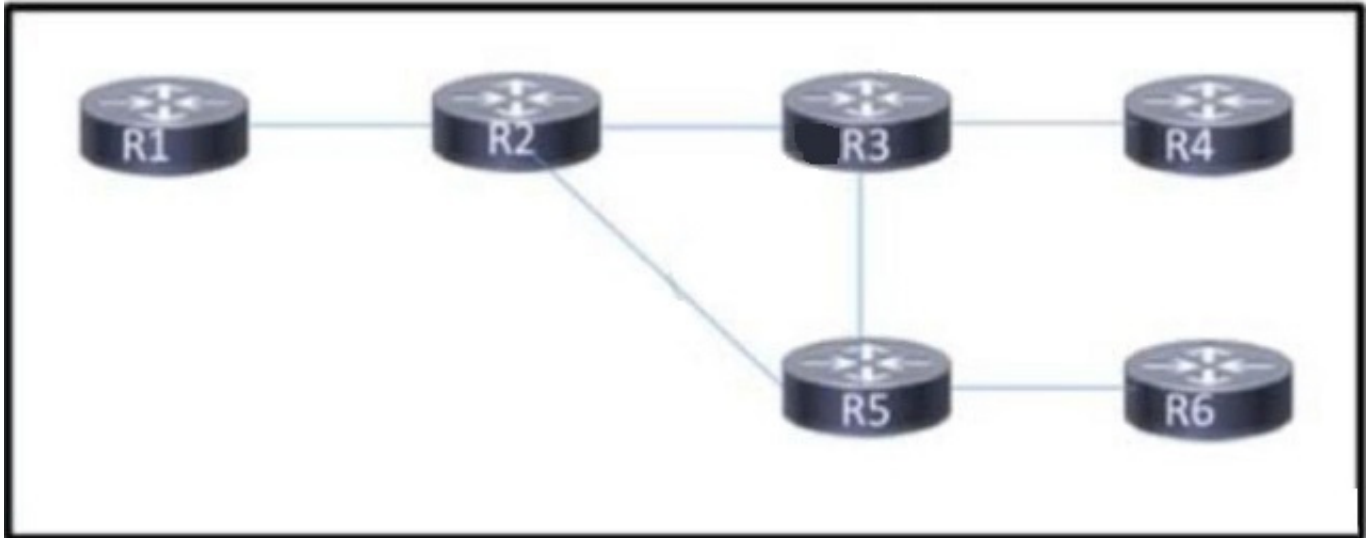
Correct Answer: B

Reference: [https://www.cisco.com/c/en/us/td/docs/switches/lan/catalyst9600/software/release/16-12/configuration\\_guide/mpls/b\\_1612\\_mpls\\_9600\\_cg/configuring\\_seamless\\_mpls.html](https://www.cisco.com/c/en/us/td/docs/switches/lan/catalyst9600/software/release/16-12/configuration_guide/mpls/b_1612_mpls_9600_cg/configuring_seamless_mpls.html)



**QUESTION 9**

Refer to the exhibit.



Customers report occasional forwarding issues from hosts connected to R6 to hosts connected to R1. A network engineer has just updated the MPLS configuration on the network, and a targeted LDP session has been established between R1 and R5. Which additional task must the engineer perform so that the team can identify the path from R6 to R1 in case the forwarding issues continue?

- A. Configure an MPLS TE from R4 to R1 that routes through R5.
- B. Implement MPLS OAM within the network.
- C. Implement MPLS VPLS within the network.
- D. Configure MPLS LDP Sync on each router.

Correct Answer: B

**QUESTION 10**

Which two tasks must you perform when you implement LDP NSF on your network? (Choose two.)

- A. Enable NSF for BGP.
- B. Implement direct connections for LDP peers.
- C. Enable NSF for EIGRP.
- D. Disable Cisco Express Forwarding.
- E. Enable NSF for the link-state routing protocol that is in use on the network.



Correct Answer: AE

Again just repeating what people said before.

A you do have to enable NSF for BGP.

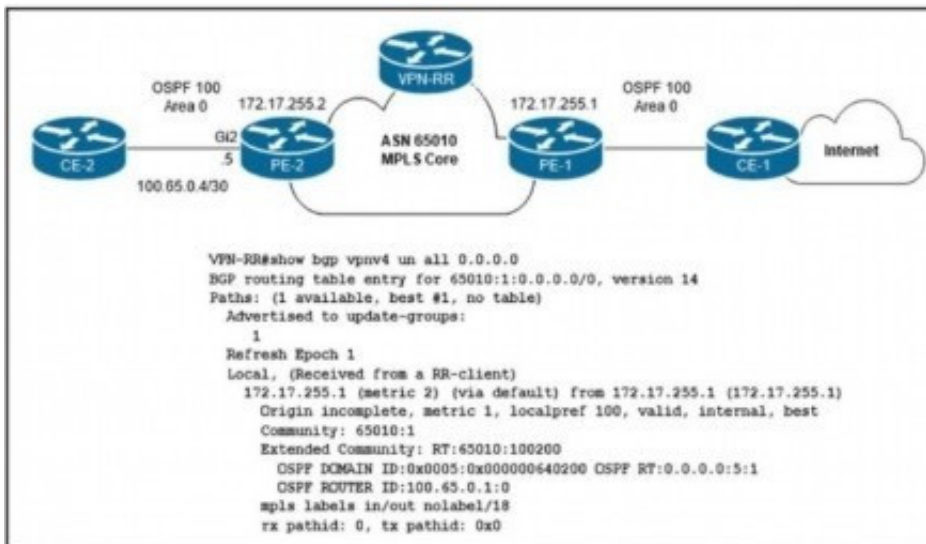
cant be B because it works for connected and non-connected peers.

LDP NSF works with LDP sessions between directly connected peers and with peers that are not directly connected (targeted sessions).

[https://www.cisco.com/c/en/us/td/docs/ios-xml/ios/mp\\_ha/configuration/15-sy/mp-ha-15-sy-book/mp-ldp-grace-nsfso.html](https://www.cisco.com/c/en/us/td/docs/ios-xml/ios/mp_ha/configuration/15-sy/mp-ha-15-sy-book/mp-ldp-grace-nsfso.html)

### QUESTION 11

Refer to the exhibit.



The network engineer who manages ASN 65010 is provisioning a customer VRF named CUSTOMER-ABC on PE-2. The PE-CE routing protocol is OSPF Internet reachability is available via the OSPF 0 0 0.0/0 route advertised by CE-1 to PE-1 In the customer VRF

Which configuration must the network engineer Implement on PE-2 so that CE-2 has connectivity to the Internet?



- A. **vrf definition CUSTOMER-ABC**  
**rd 65010:1**  
**address-family ipv4**  
**route-target both 65010:1**  
**!**  
**router ospf 100 vrf CUSTOMER-ABC**  
**network 100.65.0.4 0.0.0.3 area 0**  
**redistribute bgp 65010 subnets**  
**default-information originate**  
**!**  
**router bgp 65010**  
**address-family ipv4 unicast vrf CUSTOMER-ABC**  
**redistribute ospf 100 match internal external**
- B. **vrf definition CUSTOMER-ABC**  
**rd 65010:2**  
**address-family ipv4**  
**route-target both 65010:100200**  
**!**  
**router ospf 100 vrf CUSTOMER-ABC**  
**network 100.65.0.4 0.0.0.3 area 0**  
**redistribute bgp 65010 subnets**  
**!**  
**router bgp 65010**  
**address-family ipv4 unicast vrf CUSTOMER-ABC**  
**redistribute ospf 100 match internal external**
- C. **vrf definition CUSTOMER-ABC**  
**rd 65010:1**  
**address-family ipv4**  
**route-target both 65010:100200**  
**!**  
**router ospf 100 vrf CUSTOMER-ABC**  
**network 100.65.0.4 0.0.0.3 area 0**  
**redistribute bgp 65010 subnets**  
**default-information originate**  
**!**  
**router bgp 65010**  
**address-family ipv4 unicast vrf CUSTOMER-ABC**  
**redistribute ospf 100 match internal external**
- D. **vrf definition CUSTOMER-ABC**  
**rd 65010:2**  
**address-family ipv4**  
**route-target both 65010:1**  
**!**  
**router ospf 100 vrf CUSTOMER-ABC**  
**network 100.65.0.4 0.0.0.3 area 0**  
**redistribute bgp 65010 subnets**  
**!**  
**router bgp 65010**  
**address-family ipv4 unicast vrf CUSTOMER-ABC**  
**redistribute ospf 100 match internal external**



- A. Option A
- B. Option B
- C. Option C
- D. Option D

Correct Answer: C

---

#### QUESTION 12

A network engineer is configuring a newly installed PE router at the regional gateway location. The new PE router must use MPLS core routing protocols with the existing P router, and LDP sessions between the two routers must be protected to provide faster MPLS convergence. Which configuration must the engineer perform on the network so that LDP sessions are established?

- A. Enable RSVP-TE FRR on the LDP interface to protect the LDP session between routers.
- B. Enable communication over TCP port 646 T-LDP hello messages.
- C. Set the LDP session protection timer on each router to the same value.
- D. Enable LDP session protection on either one of the routers, which allows them to autonegotiate.

Correct Answer: D

---

#### QUESTION 13

Which component is similar to an EVPN instance?

- A. router distinguisher
- B. MPLS label
- C. IGP router ID
- D. VRF

Correct Answer: D

[350-501 PDF Dumps](#)

[350-501 VCE Dumps](#)

[350-501 Brindumps](#)